

Worldwide Forensic Services Inc.

A Premier Forensic Document and Fingerprint Examination Lab.



Forensic Examination Report



Forensic Document and Fingerprint
Examination Laboratory

RCMP Accredited and Certified
Fingerprinting Agency

55 Town Centre Court, Suite 642
Toronto, Ontario M1P 4X4 Canada
Telephone: (416) 915-7139
Toll Free: 1-877-799-3722
Direct Line: (416) 901-1898
Fax (416) 546-7773
Toll Free Fax: 1-866-735-1043
H www.wwfs.ca
Email: aksingla@wwfs.ca

Dr. Atul K. Singla

M.Sc., Ph.D. (Forensic Sc.), FSSocDip., MFSSoc., CFE

President

August 24, 2010

White Distribution Ltd.
16568 Mount Hope Road
Caledon, Ontario L7E 3K8

Attention: Mr. James White

Forensic Report
WWFS File No. 2002
Re: Signatures of Norval Morrisseau on Paintings

Dear Mr. White:

As requested, I have examined the signatures purportedly written by Norval Morrisseau on ten paintings hand delivered on July 16, 2010 and one painting delivered by courier on August 18, 2010.

I have also examined the known signatures described to be written by Norval Morrisseau on the documents and painting prints as detailed below. These signatures were examined and scanned by me on March 30, 2010 at Maslak McLeod Gallery, Toronto in the presence of Mr. Joseph McLeod. The documents were returned to Mr. McLeod on completion of on-site examination.

Questioned Signatures:

- Q1: Painting titled "SACRED SPIRIT TOTEM" bearing signature "Norval Morrisseau", written with brush and paint on its reverse side.
- Q2: Painting titled "MEDICINE BEAR" bearing signature "Norval Morrisseau", written with brush and paint on its reverse side.
- Q3: Painting titled "THE SPIRITS" bearing signature "Norval Morrisseau", written with brush and paint on its front side.

- Q4: Painting titled "FAMILY OF BIRDS" bearing signature "Norval Morrisseau", written with brush and paint on its reverse side.
- Q5: Painting titled "GREAT MOOSE" bearing signature "Norval Morrisseau", written with brush and paint on its reverse side.
- Q6: Painting titled "THUNDERBIRD" bearing signature "Norval Morrisseau", written with brush and paint on its reverse side.
- Q7: Painting titled "SACRED VISION" bearing signature "Norval Morrisseau", written with brush and paint on its reverse side.
- Q8: Painting titled "SACRED THUNDERBIRD" bearing signature "Norval Morrisseau", written with brush and paint on its reverse side.
- Q9: Painting titled "GREAT THUNDERBIRD" bearing signature "Norval Morrisseau", written with brush and paint on its reverse side.
- Q10: Painting titled "BROTHERS SHARE VISION OF LIFE" bearing signature "Norval Morrisseau", written with brush and paint on its reverse side.
- Q11: Painting titled "WHEEL OF LIFE" bearing signature "Norval Morrisseau", written with brush and paint on its reverse side.

Known Signatures:

- K1: A two-page Letter dated December 30, 1968 bearing a known signature on page # 2.
- K2: A Letter dated January 15, 1965 bearing a known signature.
- K3: Photocopy of a handwritten Note beginning with words "So I will close..." bearing a known signature.
- K4: An autographed book "The Art of Norval Morrisseau" bearing a known signature on the inner title.
- K5: A painting's print titled "Community Development" bearing a known signature written with pencil.
- K6: A painting's print titled "Great Circle" bearing a known signature written with pencil.
- K7: A painting's print titled "Vision to its Soul" bearing a known signature written with pencil.

- K8: A painting's print titled "Images of Nature" bearing a known signature written with pencil.
- K9: A painting's print titled "Ojibway Thunderbird" bearing a known signature written with pencil.

The copies of these documents/signatures are attached with this report for ready reference.

Purpose of the Examination:

The signatures described above were examined in an effort to determine, if possible:

1. Whether the questioned signatures Q1-Q11 were written by the writer of known signatures K1 to K9?

Examinations Conducted:

1. Visual and macroscopic analysis of the questioned and known signatures.
2. Comparison of the questioned signatures Q1-Q11 with the known signatures K1-K9.

Observations and Findings:

The questioned signatures Q1, Q2 and Q4-Q11 are written with brush and paint on canvas and the questioned signature Q3 is written with brush and paint on paper. The signature Q9 shows lighter strokes and the signatures Q2 and Q4 are written with broad brush(s) showing broader strokes and lesser clarity in their execution.

Giving due consideration to the possible natural variations in brush and paint writings in comparison to the writings written with pen, ballpoint pen or pencil on paper surface; the questioned signatures have been found to be written freely and fluently. These signatures do not show hesitations, slow drawn strokes, unusual shadings or lack of natural writing flow.

The known signatures made available for the examination and comparison show similar fluency in the act of writing and marked similarities in the individualized writing characteristics. Known signatures written with brush and paint are not available for comparison purposes.

The known signatures show a wide range of natural variations in their inter-se comparison. The signatures K6 and K8 are written as "Norval M", the signature K2 and K3 are written as "Norval Morriveau" (with single "s" in word "Morriveau")

and the signatures K1, K5, K7 and K9 are written as "Norval Morrisseau" (with two "s" in word "Morrisseau"). The signatures K4 and K9 show more abbreviation of the terminal portions as compared to the other known signatures.

The questioned signatures were examined minutely and compared against the known signatures. This process involved a comparison of the writing features including letter proportions; abbreviations; connections, direction of strokes; freedom of execution; line quality; method of production of letters; overall pressure and pattern of pressure emphasis; size; skill; slant; spacing; speed and range of variation-see illustrative charts 1-33.

It was determined as to whether the writing characteristics present in the questioned signatures are in the parameters of natural variations present within the known signatures. The comparison showed significant similarities in the writing characteristics and some variations which are detailed and marked on illustrative charts.

In addition to the similarities detailed on the illustrative charts, the questioned and known signatures also have similarities in the writing features detailed below:

1. The questioned signatures and the known signatures reveal similar order of writing skill and muscular co-ordination.
2. The questioned signatures and the known signatures reveal moderate writing speed and gradation in the writing pressure.
3. The relative position of words "Norval" and "Morrisseau" in the questioned signatures Q1, Q2 and Q3-Q11 is similar to the relative position of these words in the known signature K1.
4. The apex of the right shoulder of letter "M" is placed at a higher level than the apex of its left shoulder.
5. The letters in these signatures have similar combinations i.e. letters "N", "o", "R" and "v" in word "Norval" are written separately, whereas the letters "a" and "l" in this word are connected with each other. Similarly, the letters "M", "o", "R", "i" and first "s" in the second word are written separately, whereas the remaining letters in this words are connected with each other.

Please refer to the enclosed photo charts for these observations.

Conclusion:

Examination and comparison of the questioned and known signatures as described in detail in the report and on the illustrative charts lead to the following conclusion:

1. It is highly probable that the writer of known signatures K1 to K9 did write the questioned signatures Q1 to Q11.

Disposition of the Paintings:

The original paintings submitted for the examination are being returned along with this report.

Attachments to Report:

1. Thirty three illustrative charts
2. Curriculum Vitae
3. An opinion scale
4. Copies of the documents/signatures

Comments:

It is recommended that additional known signatures written with brush and paint on similar writing surfaces may be provided for more conclusive findings.

Respectfully submitted,

A handwritten signature in black ink, appearing to read 'Atul K. Singla', with a stylized flourish at the end.

Atul K. Singla M.Sc., Ph.D. (Forensic Science)
Forensic Document Examiner

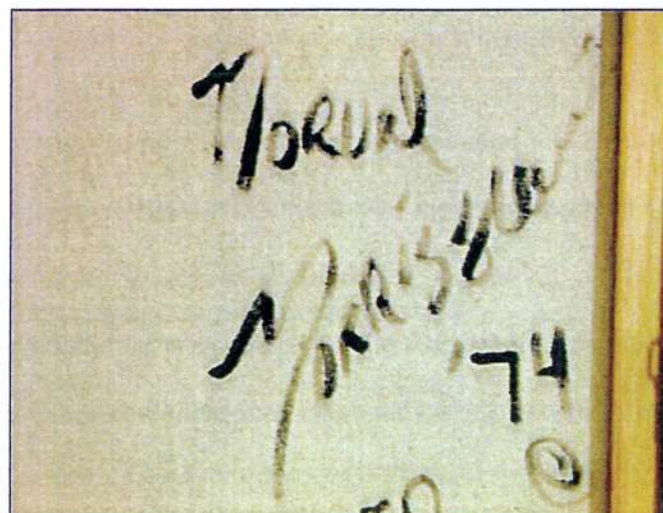
OPINION SCALE

<p style="text-align: center;">Strongest</p> <p style="text-align: center;">↑</p> <p style="text-align: center;">L E V E L O F C E R T A I N T Y</p> <p style="text-align: center;">↓</p> <p style="text-align: center;">Weakest</p>	a)	<p>There is <u>conclusive evidence</u> that the author of the specimen material wrote/did not write the questioned material.</p> <p>The possibility that an alternative hypothesis is true can, in practice, be excluded.</p>
	b)	<p>It is highly probable that the author of the specimen material <u>wrote/did not write</u> the questioned material.</p> <p>The possibility that an alternative hypothesis is true is considered to be very unlikely.</p>
	c)	<p>It is probable that the author of the specimen material <u>wrote/did not write</u> the questioned material.</p> <p>The possibility that an alternative hypothesis is true is considered to be unlikely.</p>
	d)	<p>There are indications that the author of specimen material <u>wrote/did not write</u> the questioned material.</p> <p>There is more support for the advanced hypothesis than the alternative hypothesis.</p>
	e)	<p><u>Unable to determine</u> whether or not the writer of the specimen material wrote the questioned material.</p> <p>It is not possible to determine whether the advanced hypothesis or an alternative hypothesis is true.</p>

ILLUSTRATIVE CHART # 1
(WWFS 2002)



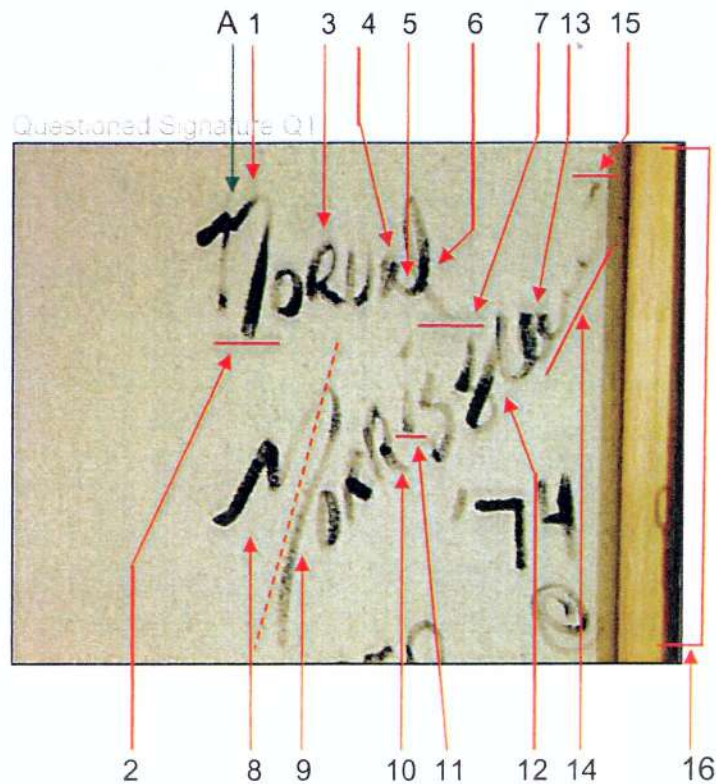
SACRED SPIRIT TOTEM 2 OF 2



Signature-Q1

ILLUSTRATIVE CHART # 2

(WWFS 2002)



Significant similarities are shown in red. Variations are shown in green.

1. The use of lower case "n" like the known signatures K2-K9
2. The terminal of letter "n" extends beyond the baseline of its left arm
3. Uppercase formation of letter "R"
4. Letter "a" is written with an open body (incomplete oval)
5. Letter "a" is continued to form letter "l"
6. Letter "l" is written with similar curved body
7. Terminal of letter "l" goes below the baseline of preceding letter "a"
8. Formation of letter "M" is similar to the known signatures such as K1, K2, K3 and K9.
9. Letter "M" is more slanted than letter "n" like the known signatures such as K1, K5, K6 and K9
10. Similar curved terminal
11. Higher placing position of letter "i" than the baseline of letter "R". Similar position in the known signatures such as K1, K2, K5 and K7
12. Letter "s" continues to form letter "e" like the known signatures such as K1, K3, K5, K7 and K9
13. Open body of letter "a" like the known signatures K1, K2 and K3
14. Letters written in continuity and showing abbreviations
15. The right shoulder of letter "u" is placed higher than the left shoulder like the known signatures K1, K2 and K3
16. This signature shows natural writing flow. There are no hesitations in the act of writing

A. Brush is lifted at this place. This stroke shows continuity in the known signatures

ILLUSTRATIVE CHART # 3
(WWFS 2002)

Known Signatures

our friend
Norval
MORRISSEAU

K1 on a Letter dated December 30, 1968

Norval m. / 79

K5 on a Painting's Print "Great Circle"

Norval Morriveau
Red hat

K2 on a Letter dated January 15, 1965

Norval Morriveau

K7 on a Painting's Print "Vision to its Soul"

Norval Morriveau
MORRISSEAU

K3 on the photocopy of a circulated handwritten Note

Norval m. / 79

K6 on a Painting's Print "Images of Nature"

Norval Morriveau

K4 in an autographed book "The Art of Norval Morriveau"

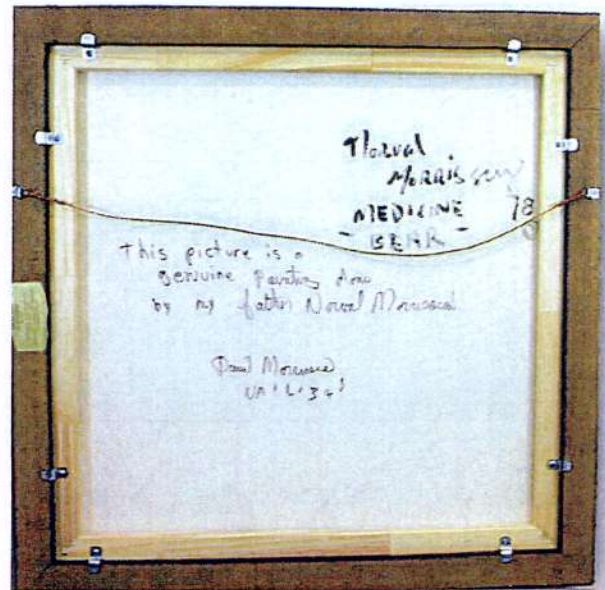
Norval Morriveau

K9 on a Painting's Print "Onwards To the Unknown"

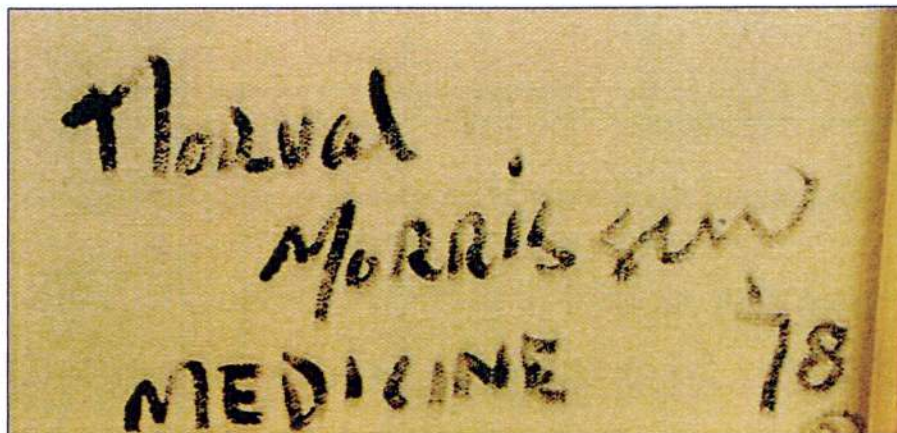
Norval Morriveau

K5 on a Painting's Print "Onwards To the Unknown"

ILLUSTRATIVE CHART # 4
(WWFS 2002)



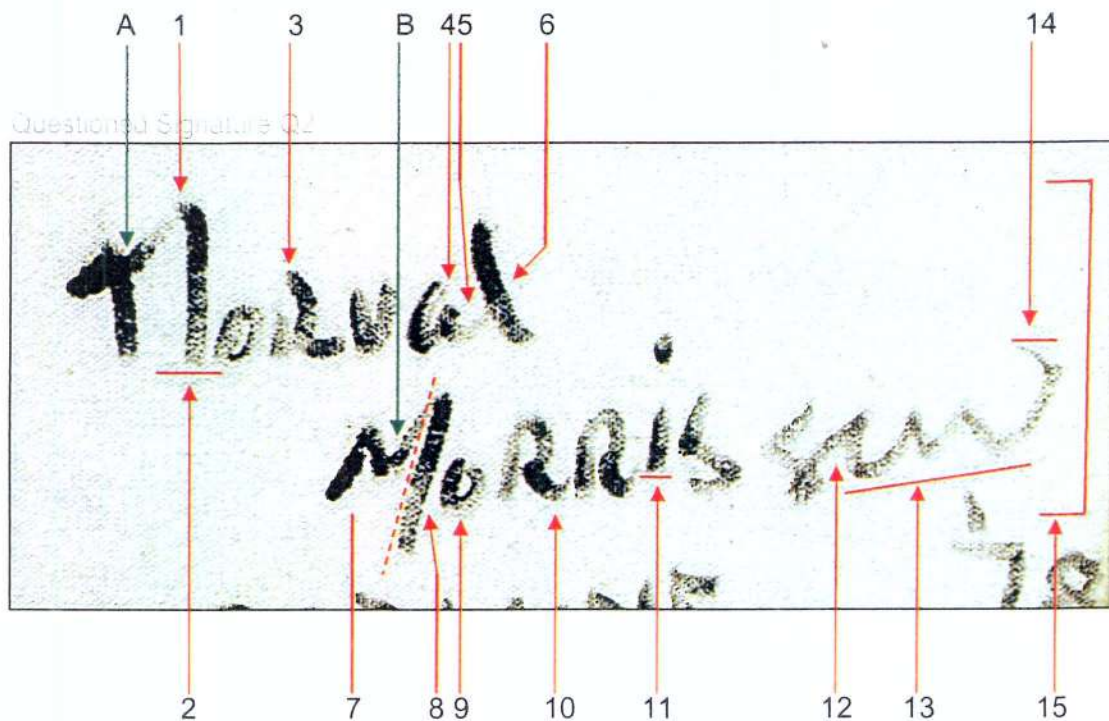
MEDICINE BEAR



Signature-Q2

ILLUSTRATIVE CHART # 5

(WWFS 2002)



Significant similarities are shown in red. Variations are shown in green.

1. The use of lower case "n" like the known signatures K2-K9
 2. The terminal of letter "n" extends beyond the baseline of its left arm
 3. Uppercase formation of letter "R"
 4. Letter "a" is written with an open body (incomplete oval)
 5. Letter "a" is continued to form letter "l"
 6. Letter "l" is written with similar curved body
 7. Formation of letter "M" is similar to the known signatures such as K1, K2, K3 and K9.
 8. Letter "M" is more slanted than letter "n", like the known signatures such as K1, K5, K6 and K9
 9. Higher placing position of the baseline of letter "o" in comparison to the baseline of letter "M"
 10. Similar curved terminal
 11. Higher placing position of letter "i" than the baseline of letter "R". Similar position in the known signatures such as K1, K2, K5 and K7
 12. Letter "s" continues to form letter "e" like the known signatures such as K1, K3, K5, K7 and K9
 13. Letters written in continuity and showing abbreviations
 14. The right shoulder of letter "u" is placed higher than the left shoulder like the known signatures K1, K2 and K3
 15. This signature shows natural writing flow. There are no hesitations in the act of writing
- A. Brush is lifted at this place. This stroke shows continuity in the known signatures
 B. Brush is lifted at this place. This stroke shows continuity in the known signatures

ILLUSTRATIVE CHART # 6

(WWFS 2002)

Known Signatures

our friend
Norval
MORRISSEAU

K1 on a Letter dated December 30, 1968

our friend
Norval Morriveau
Red hat

K2 on a Letter dated January 15, 1965

Norval Morriveau
MORRISSEAU

K3 on the photocopy of an undated handwritten Note

Norval Morris

K4 in an autographed book "The Art of Norval Morriveau"

Norval Morriveau

K5 on a Painting's Print "The Day, December 11"

Norval m. / 79

K6 on a Painting's Print "Great Turkey"

Norval Morriveau

K7 on a Painting's Print "Morriveau's Sign"

Norval m. / 79

K8 on a Painting's Print "Images of Nature"

Norval Morriveau

K9 on a Painting's Print "Offbeat, The Island"

ILLUSTRATIVE CHART # 7
(WWFS 2002)



THE SPIRITS

Mordechai Mordechai
- 20 of 7 - '740

Signature-Q3